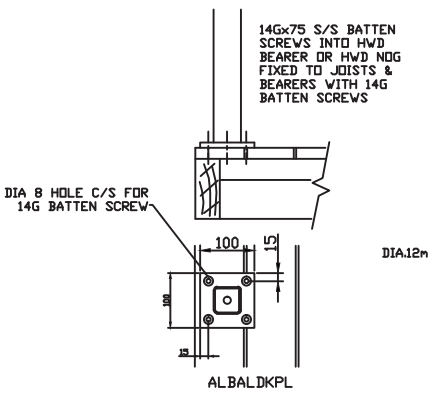
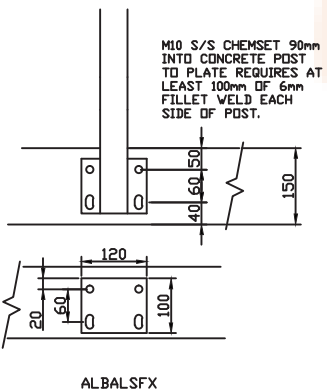


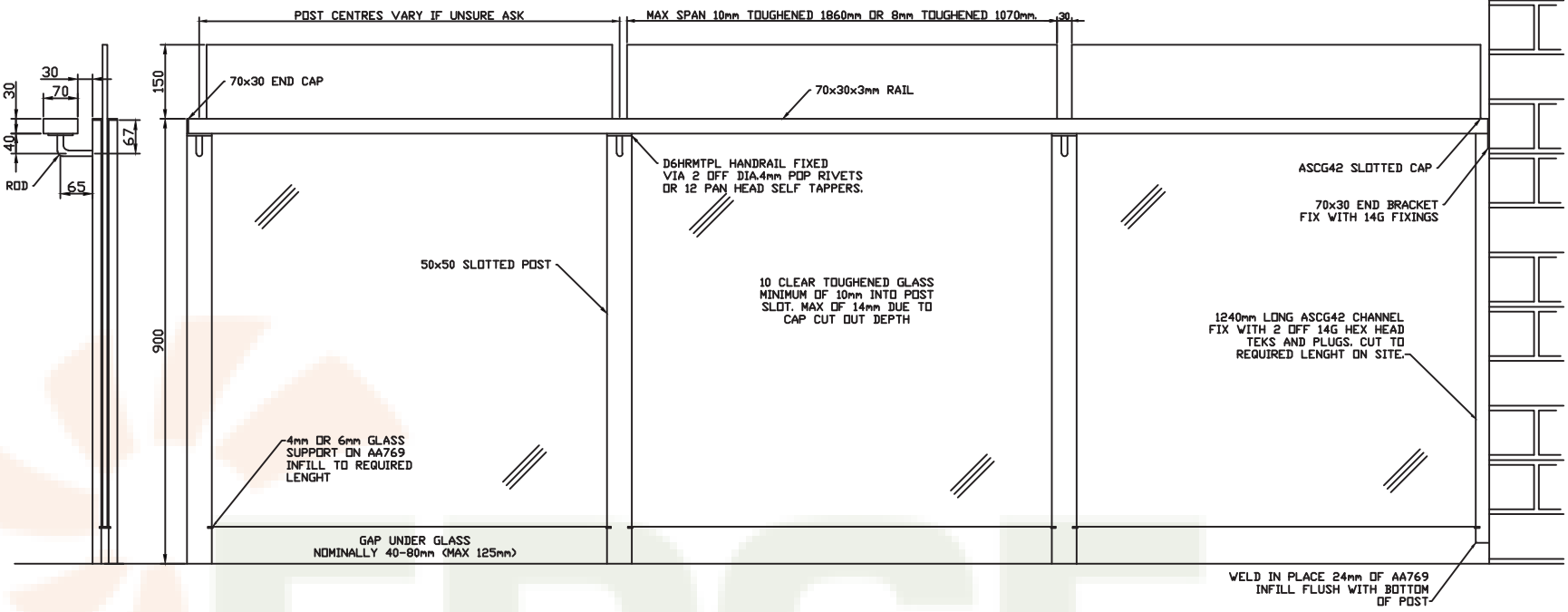
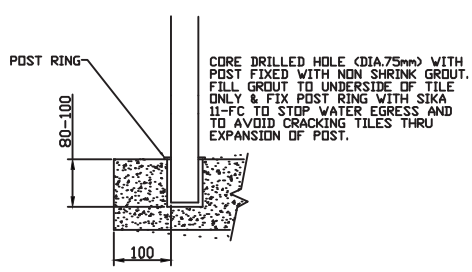
TOP FIX D/PLATE



SIDE FIX B/PLATE

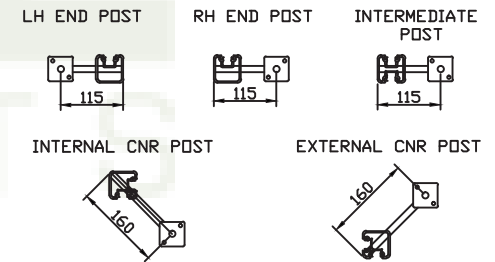


CORE DRILL FIXING

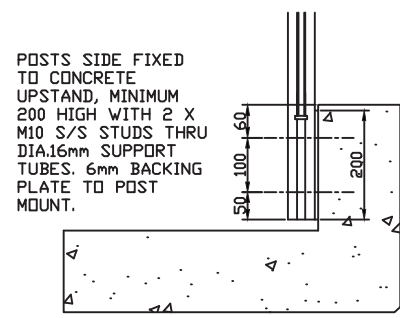


NOTES: SIKA 11FC APPLIED TO POST POCKET AND GLASS TO FORM TO STOP GLASS PANEL FROM MOVING.
 GLAZING RUBBER FOR 10mm GLASS GR22 OR PACIFIC RUBBER P969 DUE TO EXTRUSION VARIATIONS.
 AA769 INFILL TO BE SUPPLIED AT 125mm LONG FOR GLASS SUPPORT AND TRIMMED ON SITE.
 END 1-WAY POST 629851, INTERMEDIATE 2-WAY 629852, CNR 2-WAY 629850, AA769 POCKET INFILL.
 70x30x3 TO BE JOINED WITH 400 LONG FOLDED CHANNEL TO FACILITATE TRANSPORT & POWDER COATING.
 AREAS WHERE THE LANDING IS MORE THAN 5m FROM GROUND LEVEL AND THERE IS A RISK OF INJURY FROM FALLING OBJECTS HEAT SOAKED GLASS MAY BE REQUIRED, IF UNSURE ASK!

HANDRAIL BRACKET ORIENTATION



SIDE THRU FIXING



EDGE CONCEPTS (QLD) PTY LTD
 50-52 KABI CIRCUIT
 DECEPTION BAY 4508
 PH.3897 8700
 FAX.3897 8777

PART NO. D6 SQ POST GLASS BALUSTRADE	
DESCRIPTION. GLASS BALUSTRADE	
SCALE: NTS	DATE: JAN 2011
DRAWN: A.H.S.	