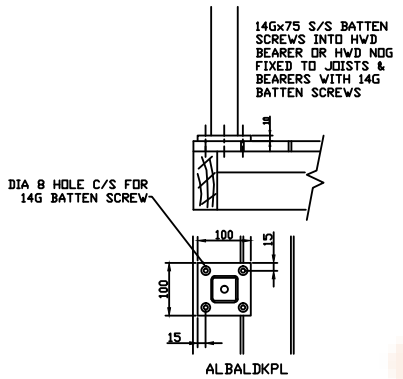
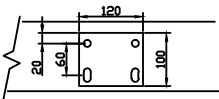
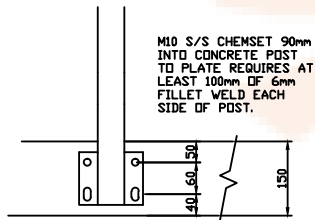


TOP FIX D/PLATE

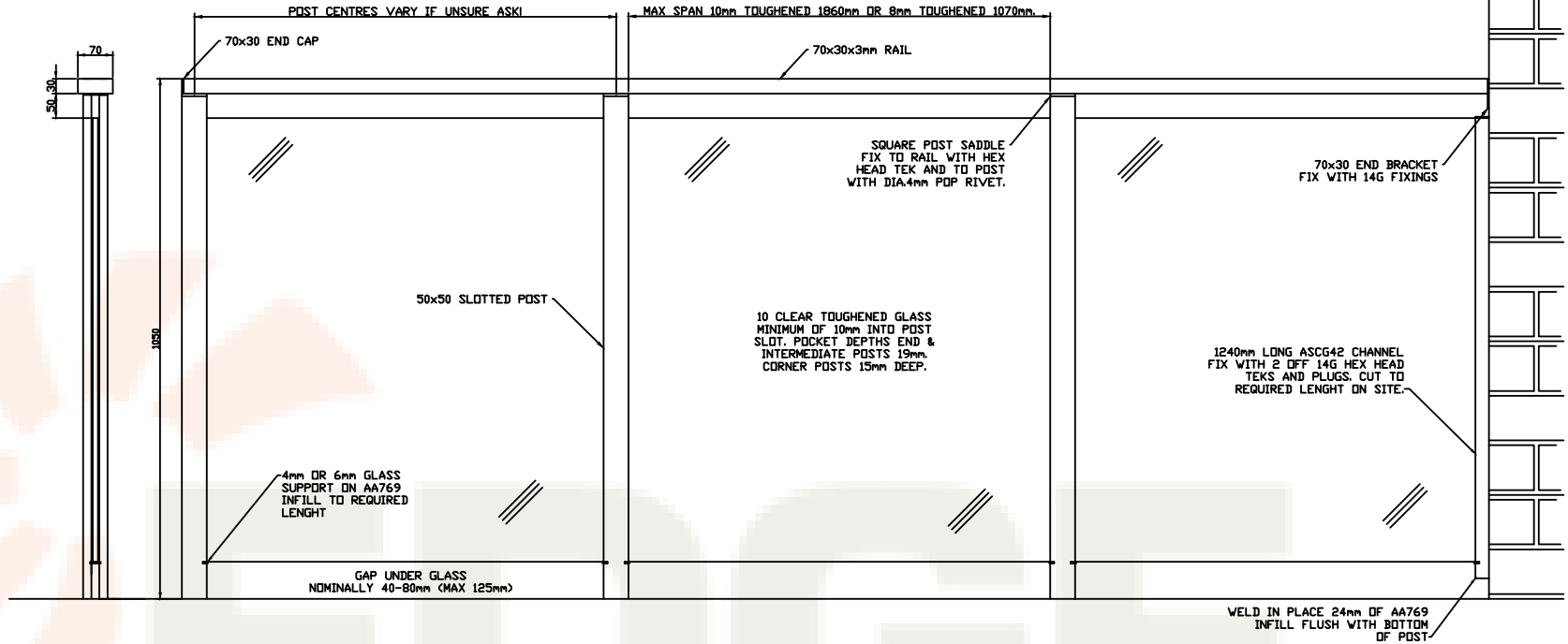
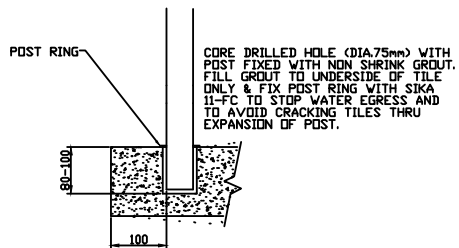


SIDE FIX B/PLATE



ALBALSFX

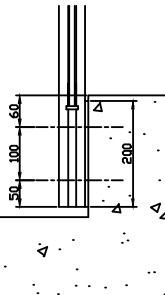
CORE DRILL FIXING



NOTES:SIKA 11FC APPLIED TO POST POCKET AND GLASS TO FORM TO STOP GLASS PANEL FROM MOVING.
 GLAZING RUBBER FOR 10mm GLASS GR22 OR PACIFIC RUBBER P969 DUE TO EXTRUSION VARIATIONS.
 AA769 INFILL TO BE SUPPLIED AT 125mm LONG FOR GLASS SUPPORT AND TRIMMED ON SITE.
 END 1-WAY POST629851, INTERMEDIATE 2-WAY 629852, CNR 2-WAY 629850, AA769 POCKET INFILL.
 70x30x3 TO BE JOINED WITH 400 LONG FOLDED CHANNEL TO FACILITATE TRANSPORT & POWDER COATING.
 AREAS WHERE THE LANDING IS MORE THAN 5m FROM GROUND LEVEL AND THERE IS A RISK OF INJURY FROM FALLING OBJECTS HEAT SOAKED GLASS MAY BE REQUIRED, IF UNSURE ASK!

SIDE THRU FIXING

POSTS SIDE FIXED TO CONCRETE UPSTAND, MINIMUM 200 HIGH WITH 2 X M10 S/S STUDS THRU DIA.16mm SUPPORT TUBES. 6mm BACKING PLATE TO POST MOUNT.



EDGE CONCEPTS QLD PTY LTD 50-52 KABI CIRCUIT DECEPTION BAY 4508 PH.3897 8700 FAX.3897 8777	PART NO.	
	D5 SQ POST GLASS BALUSTRADE	
	DESCRIPTION.	
GLASS BALUSTRADE		
SCALE: NTS	DATE: JAN 2011	DRAWN: A.H.S.