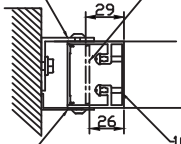


MATERIAL: ALUMINIUM 6063 T5

40x40x3 MOUNT ANGLE FIXED WITH 14G HEX HEAD TEKS MIN TWO FIXING AND SCREEN FIXED WITH MIN THREE POP RIVETS PER SIDE

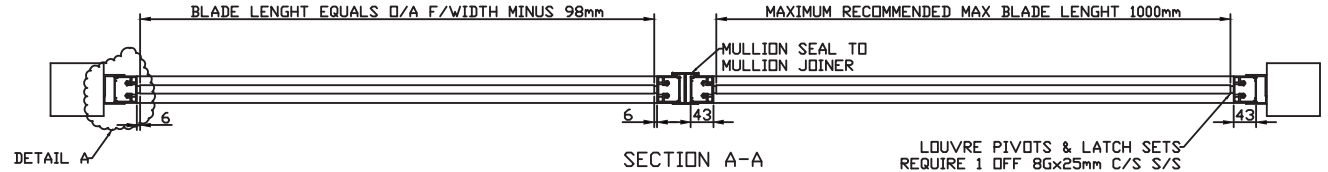
KEEP FIXINGS CLEAR OF LINK BARS ON LEVER SIDE OF SCREENS. POP RIVETS FOR ANGLES TO BE LOCATED AT BLADE EDGE LINE AWAY FROM BLADE PIVOT POINTS.



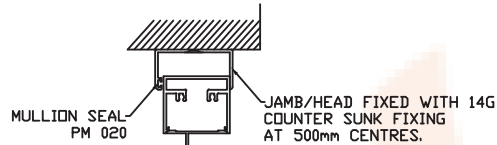
40x12 COVER ANGLE FIXED WITH POP RIVETS MIN THREE PER ANGLE

10Gx35mm PAN HEAD SS SELF TAPPERS

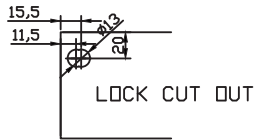
DETAIL A



LOUVRE PIVOTS & LATCH SETS REQUIRE 1 OFF 8Gx25mm C/S S/S SELF TAPPER TO ASSEMBLE

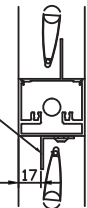


DETAIL B

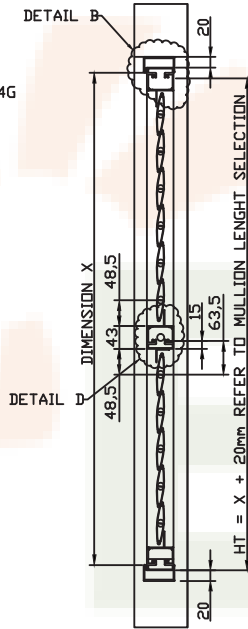


DETAIL C

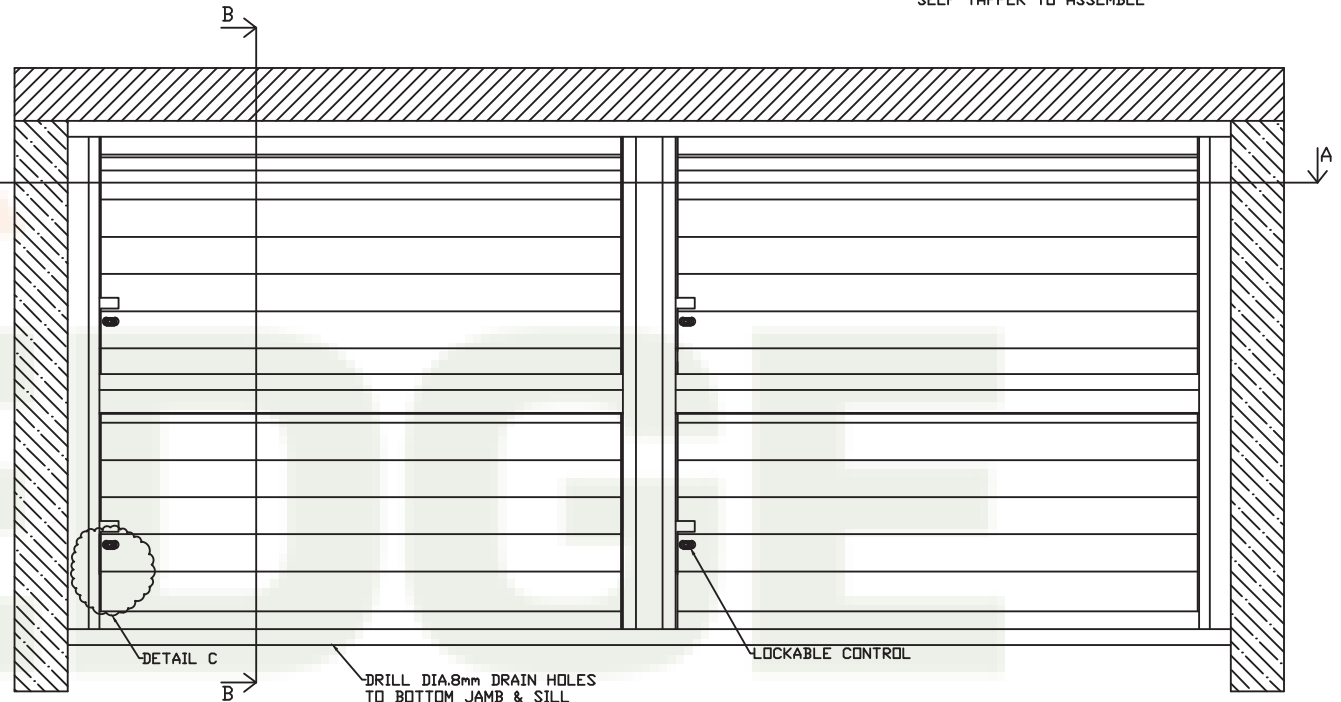
25x25x1.6mm E.A. FIXED WITH POP RIVETS AT 300mm CENTRES



DETAIL D



SECTION B-B



SCREEN PANEL INSIDE VIEW

FORMULAS

$$\text{FRAME WIDTH} = \frac{\text{ADS} - ((\text{No. MULLIONS} \times 30) + 30)}{\text{No. SCREENS}}$$

$$\text{FRAME HEIGHT} = \text{DAY LIGHT HEIGHT} - 40$$

$$\text{FRAME HT MIN} = ((\text{No. BLADES} - 1) \times 70) + 176$$

$$\text{FRAME HT MAX} = ((\text{No. BLADES} - 1) \times 70) + 216$$

NOTE: IT IS RECOMMENDED TO INSTALL THE MOUNT ANGLES AND TOP AND BOTTOM HEAD/JAMB BEFORE MANUFACTURING SCREENS TO ENSURE CORRECT MEASUREMENT OF THE HORIZONTAL AND VERTICAL OPENING DIMENSIONS. ADDITIONAL COVER ANGLES MAY BE REQUIRED DUE TO VARIATIONS IN THE HEAD, FLOOR AND WALL SURFACE LEVELS.

NOTE: THIS DRAWING IS TO BE READ IN CONJUNCTION WITH THE PMAA 6000 SERIES LITERATURE.
 : IF FITTING MULLION CAPS DEDUCT 5mm OFF EACH MULLION.
 : CUTTING LOUVRE BLADE DEDUCT 98mm OFF O/A FRAME WIDTH.
 : RECOMMENDED TO ALLOW LOCKABLE CONTROL TO EACH BANK OF 12 LOUVRES.
 : RECOMMENDED TO FITTING MIDRAIL/TRANSOM IF EXCEEDING 13 OFF LOUVRE BLADES.
 : ALLOW 15mm EACH END AND 30mm PER MULLION JOINER TO CALCULATE FRAME WIDTHS.
 : MULLION SEAL ALWAYS TO THE OUTSIDE.

EDGE CONCEPTS (QLD) PTY LTD 50-52 KABI CIRCUIT DECEPTION BAY 4508 PH.3897 8700 FAX.3897 8777	PART NO. 43mm HEAD AND SILL / WITH TRANSOME	
	DESCRIPTION. PMAA 6000 SERIES ADJUSTABLE BLADE SUN LOUVRE	
	SCALE: NTS	DATE: OCT 2012